

# Welcome to the 2021/22 Opportunities Fund Information Session Webinar – October 15, 2021

## Reminders

- Today's webinar will be recorded and posted on our website afterwards.
- Check out the Q&A to ask and upvote questions.
- The public chat is disabled.
- You can send chat messages to the Metcalf team if you need technical assistance.

## Agenda

Welcome  
Presentation  
Q&A  
Closing

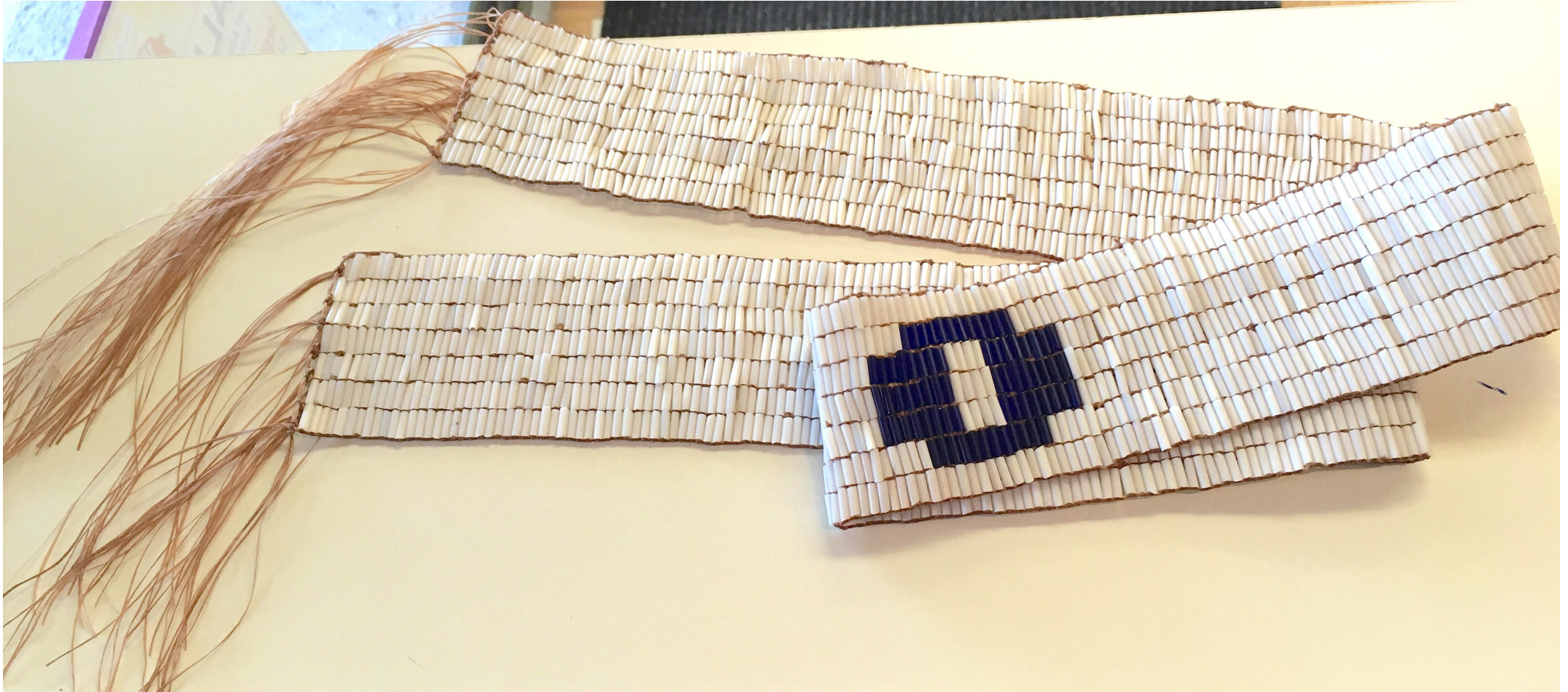
## Accessibility

Live transcription is enabled, click on CC to access captioning.

Contact Inclusive Local Economies Program Director, **Adriana Beemans** at [abeemans@metcalffoundation.com](mailto:abeemans@metcalffoundation.com)

# Land Acknowledgement

Dish with One Spoon Wampum Belt



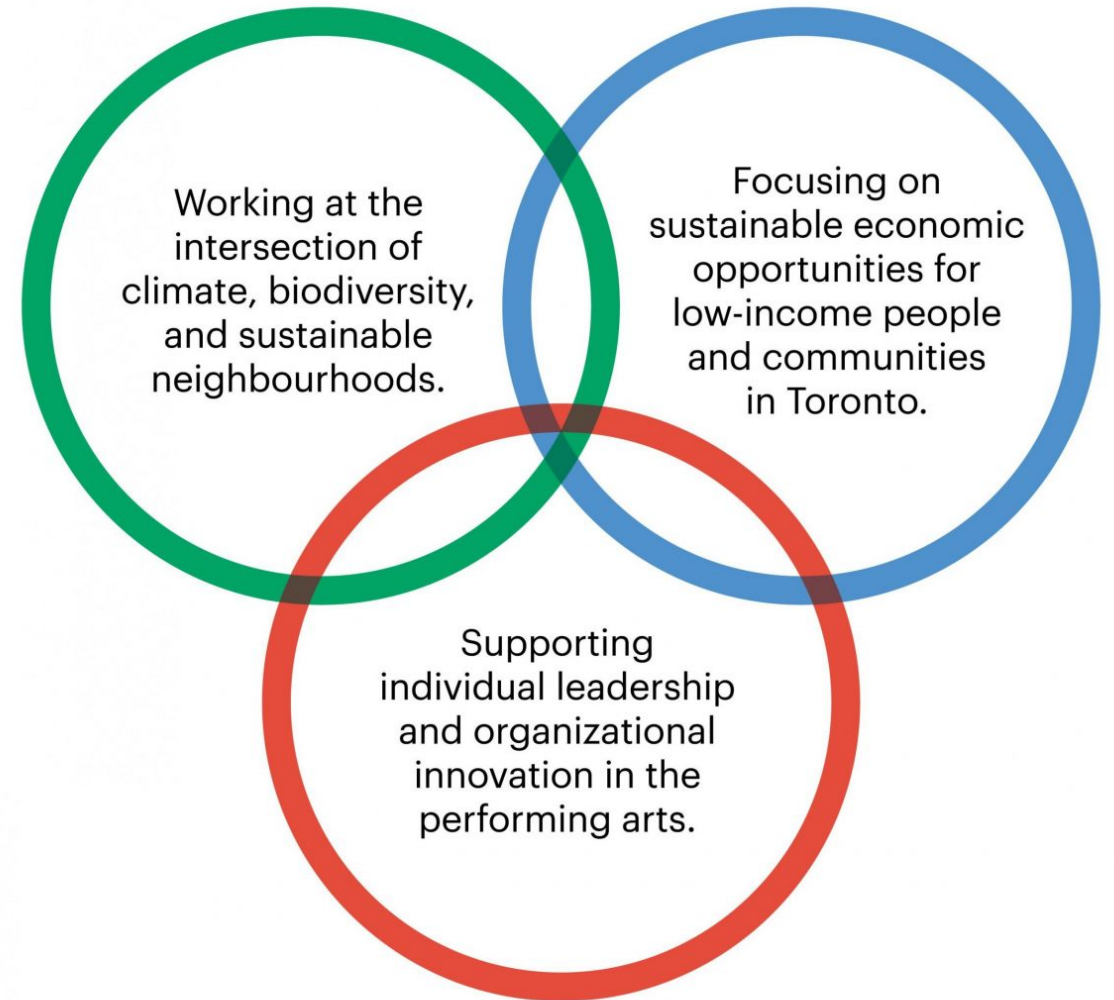
# METCALF FOUNDATION

The mission of The George Cedric Metcalf Charitable Foundation is to enhance the effectiveness of people and organizations working together to help Canadians imagine and build a just, healthy, and creative society.

“Our grants must seek impact, to be both brave and wise. We should be the rare money—the support that is not otherwise available—that opens a door, draws a connection, conjures an opportunity, or creates a pause.”

**Sandy Houston**  
President and CEO

We create change by:





# Inclusive Local Economies Program

Supports the development of long-term strategies that can create sustainable economic opportunities and generate wealth for low-income people and communities in Toronto.

We do this by seeking alternative models, bold ideas, creative partnerships, and promising public policies that can:

Help increase access  
to quality jobs

Protect precarious  
workers

Strengthen local  
neighbourhood economies

# Opportunities Fund - Strategic Areas

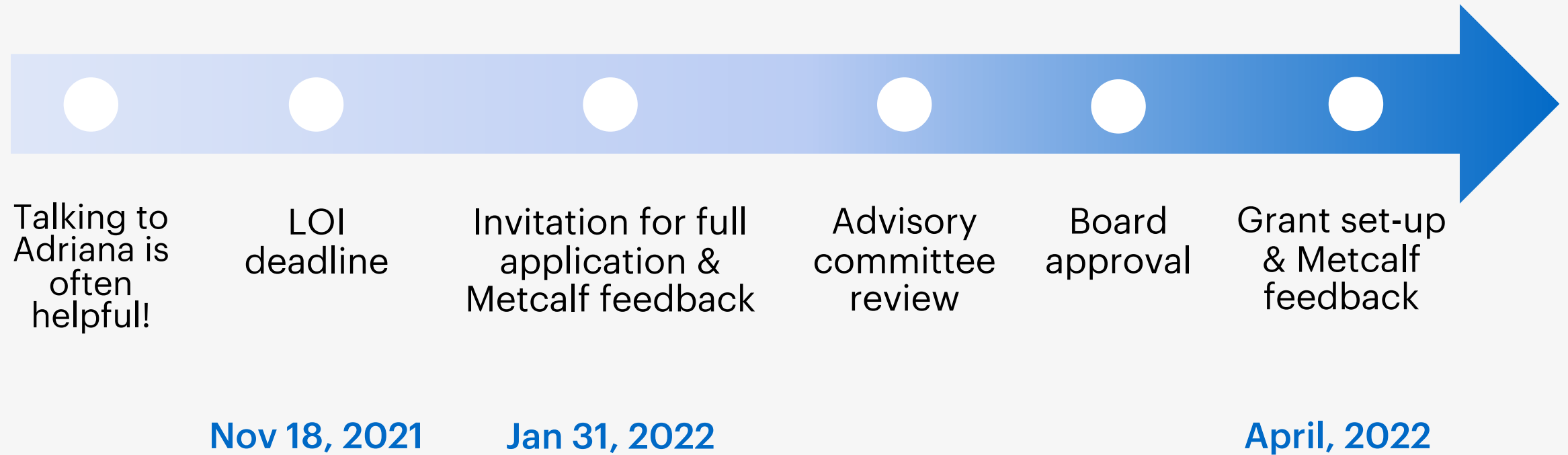
The goal of the Opportunities Fund is to improve the economic livelihoods of low-income people through strategies that:

Make precarious jobs better (raise the floor) and support the upward mobility of workers (build ladders).

Reduce barriers for low-income entrepreneurs & alternative business models.

Leverage the capacity of neighbourhoods to improve the economic livelihoods of low-income residents.

# Process



# Letter of Interest (LOI)

## **Organizational Overview:**

Brief summary about the organization

## **Overview of Project:**

Please describe the purpose of the project, what you aim to achieve, your strategy to achieve these goals

## **Collaboration:**

How are you collaborating with others in this project?

# Full application – 11 page limit

Organization Overview & Attachments

Project Overview & Project Strategy

Project Workplan & Budget

Project Evaluation & Learning

Collaboration & Leadership & Letters of Support



# What does success look like?

We will assess applications on the basis of:

- the project alignment with the goals of the Inclusive Local Economies program and the Opportunities Fund;
- the clarity of your proposal, the credibility of the strategy, the rationale for the work, and the likelihood of success;
- the potential for impact, contribution to systems change, and analysis of equity; and
- the potential for learning about new approaches and practices for both the project partners and the Foundation.

# Eligibility

Organizations may apply individually or in collaboration with others. Lead applicants must be:

- committed to improving outcomes for low-income people and communities,
- based and active within the City of Toronto; and
- registered as a charity through the Canada Revenue Agency.

Generally, we do not fund:

- direct services that focus purely on developing job skills;
- direct financial support to for-profit enterprises — social or otherwise;
- ongoing operating expenses that are unrelated to the proposed project;
- capital projects;
- endowments; or
- deficits.

# Common Questions

What does the granting relationship look like?

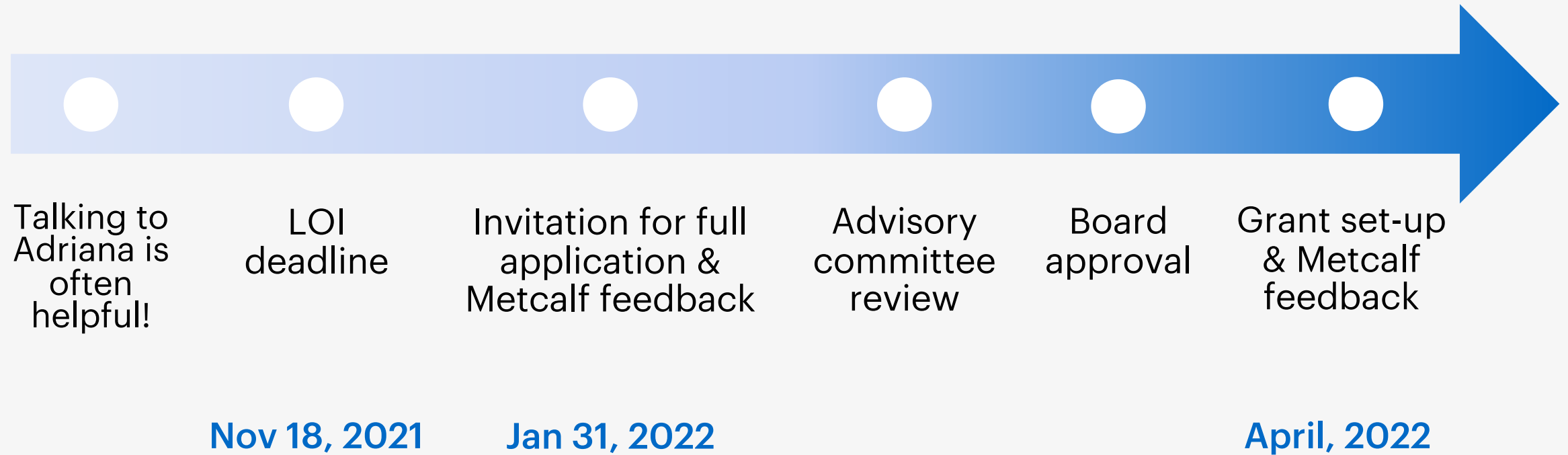
Do we need to be a charity?

Who do you fund?

How much and how long?

What do you mean by equity?

# Process



# Thank you!

LOI deadline –  
**November 18, 2021 at 2PM ET**

Website –  
**[www.metcalffoundation.com](http://www.metcalffoundation.com)**

Contact Inclusive Local Economies  
Program Director, **Adriana Beemans** at  
**[abeemans@metcalffoundation.com](mailto:abeemans@metcalffoundation.com)**